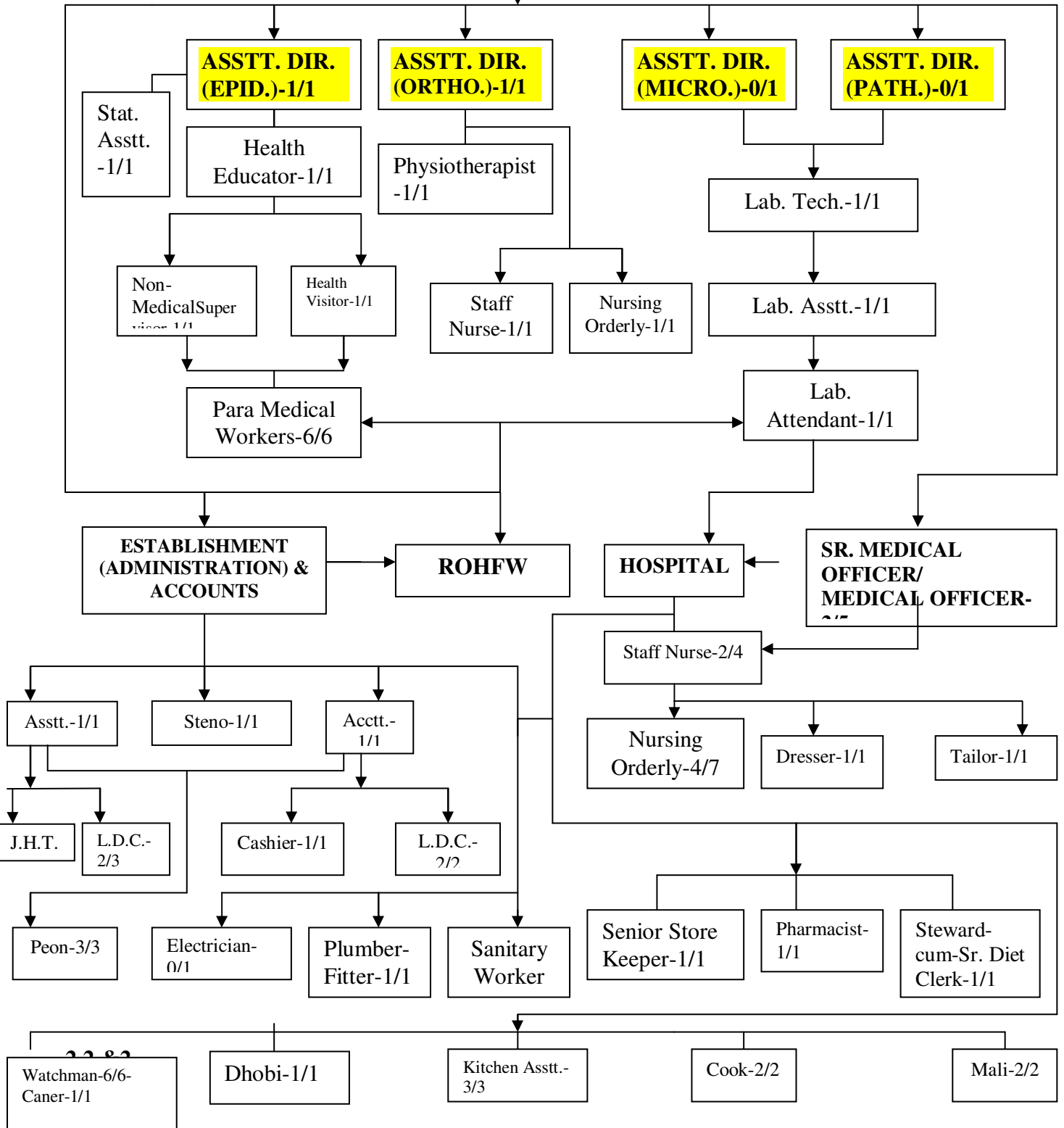


2. ORGANOGRAM OF RD and RLTRI

DIRECTOR, RLTRI/RD

**DEPUTY
DIRECTOR-1/1**



3 Infrastructure and Estate

Buildings (Indicating Floor area), Hostels/Residential Quarters, Canteens etc. of RLTRI, Raipur.

- (a) Administrative block-Director office, Auditorium, Seminar Room,
- (b) Hostel Block-28 double beded rooms with common toilet facility with Kitchen and dining hall facility.
- (c) Hospital block-At present 3 wards functioning (55 beds), OPD Cubicles, Laboratory for Leprosy patients, Laboratory for NVBDCP work (started from July 2008), Pharmacist room, Stores, X-Ray unit, Physiotherapy unit, Air-conditioned Operation Theatre
Remarks-1 ward given to State Tuberculosis Training cum DemonstrationCenter under RNTCP.
- (d) Staff Quarters-Type-A-19, Type-B-33, Type-C-4, Type-D-5, Type-E-3.
Remarks-Two Type E quarters given to Malaria unit of ICMR.

- Links and network with other organization, Collaboration of activities etc.